

Name:

Date:

Period:

Cell Transport Test

Write out definitions for the following words: (2 points each)

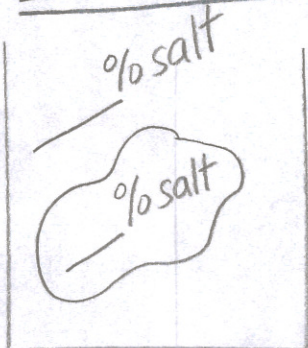
1. osmosis –
2. high concentration –
3. low concentration –
4. selectively permeable membrane –

Short Answer:

Draw a model of diffusion with an explanation as to what is occurring. (5)

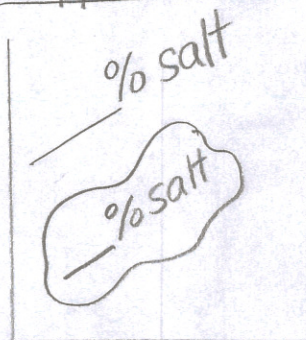
Use the labeled beakers below to identify salt amounts, where the water will flow (with arrows), and write what will happen to the cell. (12)

Isotonic



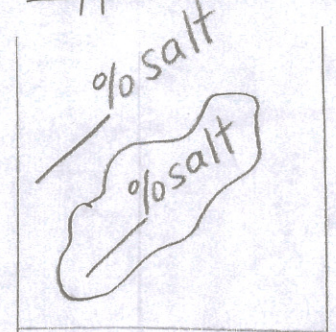
cell will

Hypotonic



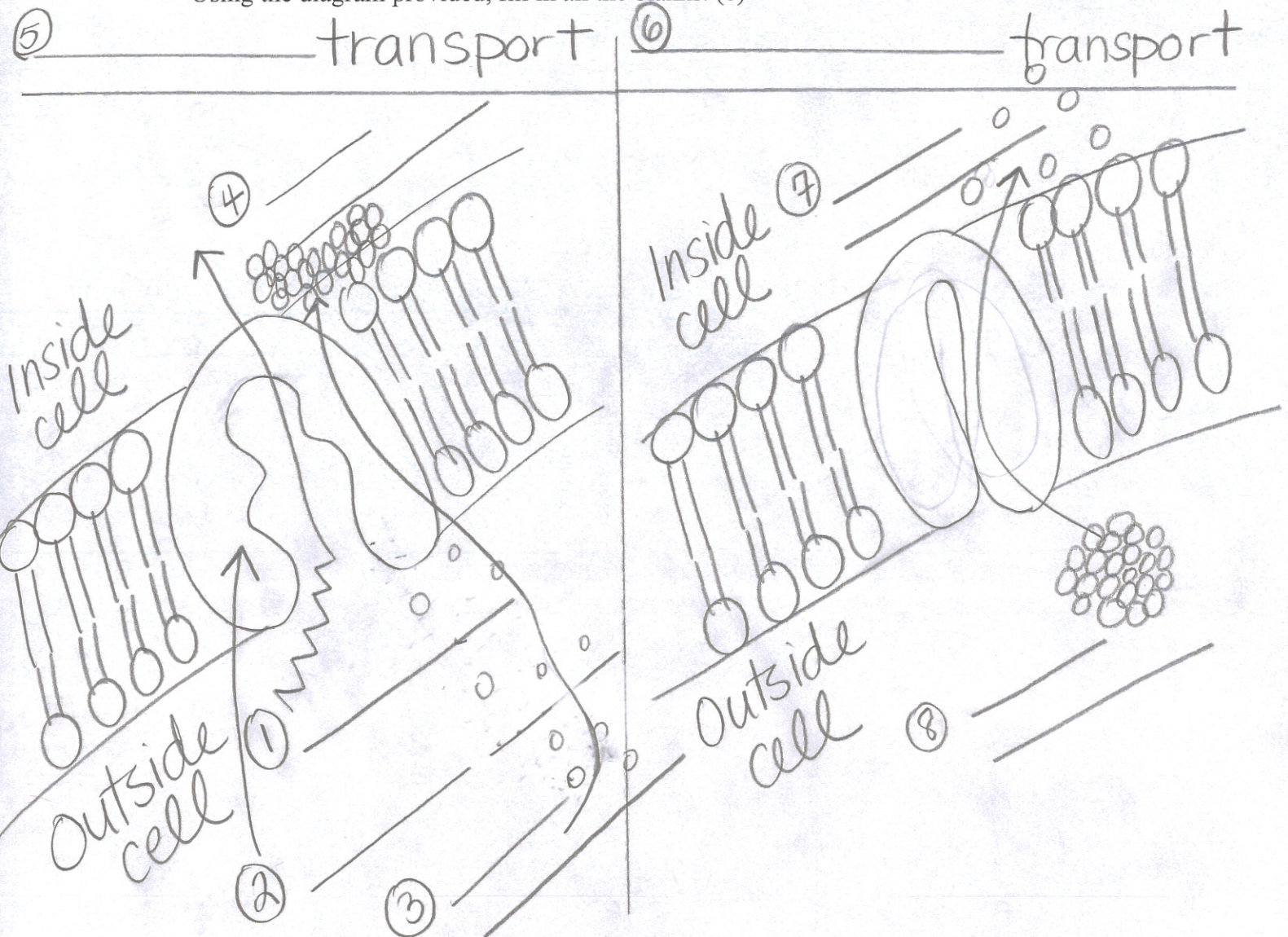
cell will

Hypertonic



cell will

Using the diagram provided, fill in all the blanks. (8)



Draw either a cell going through endocytosis or exocytosis. Then explain what is happening within each step. (10)

Matching: Use capital letters only! Letters will be used more than twice! (2 points each)

- | | |
|-------------------|--|
| A. photosynthesis | 1. ____ occurs in mitochondria |
| | 2. ____ occurs in cytoplasm |
| B. respiration | 3. ____ occurs in chloroplasts |
| C. fermentation | 4. ____ starting materials are water, carbon dioxide, and sunlight |
| | 5. ____ starting materials are sugars and oxygen |
| | 6. ____ 2 types are alcoholic and lactic acid |
| | 7. ____ products are energy, carbon dioxide, and oxygen |
| | 8. ____ products are oxygen and sugar |
| | 9. ____ process of releasing energy without oxygen |
| | 10. ____ process of using oxygen to release energy in sugars |
| | 11. ____ process of changing sunlight energy into chemical energy |

Choose 2 of the 3 essays below:

- 1) What is salting fields? Explain and provide detail.
- 2) Explain why plants wilt using vocabulary.
- 3) Why don't you want to drink too much sea water? Explain, using vocabulary.